

## **IN THE KNOW: Keeping Staff Informed**

**Volume 19 (26) July 2024**

Struggling to access any of the articles in the bulletin today? Some may be available via [Athens](#) (for eligible library members), you can check [using Google Scholar](#). Article not available via Athens or you don't have a login? [Request the article](#) from the library! Not a member yet? You can [join here](#).

Check out our library [website](#) and our [Twitter](#) for details of all our services, facilities and any forthcoming events.



**Do you have feedback about library resources, staff, or spaces? Share it here:** <https://www.surveymonkey.com/r/KDFeedback>

### **In this issue:**

**IN THE SPOTLIGHT**

**MANX SKEET**

**STAFF HEALTH & WELLBEING**

**HOT OFF THE PRESS**

**PUBLIC HEALTH**

**EVIDENCE BASED PRACTICE**

**SOCIAL AND COMMUNITY CARE**

**HEALTH MANAGEMENT**

**PATIENT INFORMATION**

**LIBRARY BITS AND PIECES**

## **IN THE SPOTLIGHT**

[The Nursing and Midwifery Council Independent Culture Review](#)

[Counting the dead in Gaza: difficult but essential](#)

[NHS urged to prioritise cancer care basics over tech and AI 'magic bullets'](#)

## **STAFF HEALTH & WELLBEING**

[More than a quarter of staff absences in Avon and Wiltshire Mental Health Partnership Trust are stress-related](#)

[Long COVID: Support in healthcare workplaces](#)

[Ambition for clean bathing water in Peel by 2025 says MHK](#)

[Match food recipes](#)

[Stretching Before Bed](#)

[Clinical care ratios for allied health practitioners: an update and implications for workforce planning](#)

[Consumer inflation rises to 3%](#)

## **Useful links**

[\*\*Patient.co.uk\*\*](#)

[\*\*NHS Website\*\*](#)

[\*\*Mental Health Foundation\*\*](#)

[\*\*World Health Organisation\*\*](#)



## MANX SKEET

[Amount taxpayers would spend on assisted dying service unknown](#)

[Extra Keys sitting to continue assisted dying debate](#)

[Update expected for Port Erin Dental Practice patients](#)

[Isle of Man Prison has improved but some measures still need addressing](#)

[Four ED admissions in a few hours prevented Southern 100 session continuing](#)

[Allinson: 'Silent majority' open to assisted dying](#)

[Manx Care forecasting £18.7m overspend](#)

[Medical director and nursing director depart Manx Care](#)

[Children's champion wants focus on children with 'complex and additional needs'](#)

[Chief minister weighs odds of another pandemic](#)

[Local dentist given official warning from General Dental Council](#)

[Changing places facility at Noble's Hospital given green light](#)

[Government Covid refund Facebook post 'disrespectful' says MHK](#)

[2.2% increase in demand for surgery 'must be analysed'](#)

[School to close for 'deep clean' due to vomiting bug](#)

## HOT OFF THE PRESS

### BBC News

[Streeting begins talks to halt junior doctor strike](#)

[Fall after fall - care home accused of neglect](#)

[Nurse regulator condemned over toxic culture](#)

['I've no idea how I developed asbestos-related cancer'](#)

[Fix NHS gaps or face more attacks - ex cyber chief](#)

[Lucy Letby sentenced to 15th whole life term](#)

[Maternity staff faced racism from colleagues - CQC](#)

[NI records sharp rise in measles cases](#)

['I'm as happy as I've been in my life,' says aid worker Simon Boas as he faces death](#)

[Inquiry after butt lift patients are hospitalised](#)

[Nine whooping-cough deaths reported as cases rise](#)

[Health secretary orders review of NHS performance](#)

[Some smear test scientists investigated over screening](#)

[Narcissists mellow with age, study suggests](#)

[Scientists start human testing of Marburg virus vaccine](#)

#### Useful Health Links

[NHS Website: A-Z of health conditions](#)

[NHS Website](#)

[Check NHS standards near you](#)

[Cancer Help UK](#)

[British Heart Foundation](#)

[Health and Care Professions Council](#)

[Mental Health Foundation](#)

[General Medical Council](#)

[Nursing and Midwifery Council](#)

[Care Quality Commission](#)

[NICE](#)

[NHS Scotland](#)

[Health in Wales](#)

[NI Direct](#)

[Clinical trials information](#)

[Diabetes UK](#)

[British Lung Foundation](#)

[National Obesity Forum](#)

#### Critical Thinking

Do you believe everything you read? Is there truth behind the headlines? Why does false information spread so fast on social media? What can you do to make sure you don't get taken in? Start by looking up the stories on websites such as the ones below:

[BBC Reality Check](#)

[Full fact](#)

[Ferret Fact Service](#)

[British Heart Foundation – Behind the headlines](#)

#### Misinformation

Do you keep a look out for misinformation circulating online? Do you know the impact it could have on patients? How do you counter it?

[Social Media Authentication and Users' Assessments of Health Information: Random Assignment Survey Experiment](#)

[Susceptibility to scientific misinformation and perception of news source reliability in secondary school students](#)

[Building a framework for fake news detection in the health domain](#)

## **Bulletins**

**(click to open)**

[Bulletin for clinical commissioning groups \(CCGs\)](#)

[Chief Nursing Bulletin](#)

[Healthcare Science Bulletin](#)

[Compassion in Practice strategy and 6Cs Live!](#)

[Liaison and Diversion Bulletin](#)

[Pharmacy and Medicines Bulletin](#)

[Primary Care Bulletin](#)

[Specialised Commissioning Stakeholder Bulletin](#)

[Revalidation Matters](#)

[Liaison and Diversion Bulletin](#)

[Specialised Commissioning Stakeholder Bulletin](#)



## **PUBLIC HEALTH**

**Health e-News Bulletin/NLH Public Health Newsletter**

**Adult Protection & Safeguarding Domestic Violence**

[Essential Care for Women Experiencing Intimate Partner Violence](#)

[Adversity in childhood as a risk and vulnerability factor for intimate partner violence](#)

## **Addiction**

[Prospective longitudinal relations among frequent social media use, nicotine vaping and experiencing internalizing mental health problems](#)

[Somatic and psychiatric comorbidity in people with diagnosed gambling disorder: A Finnish nation-wide register study](#)



## **Allergies**

[Anaphylaxis and desensitization differently activate and induce IL-8 release by mast cells in a human peanut allergy in vitro model](#)

[Prevention of allergic airway and gut inflammation in humanized mice by lactobacilli, bifidobacteria, and butyrate](#)

[Genomic variants association with selective hypersensitivity reactions to amoxicillin and clavulanic acid](#)

[Indoor and outdoor pollutants—No safe amount of air to breathe in](#)



## **Cardiovascular Disease**

[What Are the Long-Term Effects of Dual vs. Single Antiplatelet Therapy After Coronary-Artery Bypass Grafting?](#)

[The LDL cumulative exposure hypothesis: evidence and practical applications](#)

[Consequences of ionizing radiation exposure to the cardiovascular system](#)

## Antibiotic Prophylaxis and Infective Endocarditis Incidence Following Invasive Dental Procedures



### **Complementary Medicine/Alternative Medicine**

The effect of Cuminum cyminum on the return of bowel motility after abdominal surgery: a triple-blind randomized clinical trial

Safe use elements of finished herbal products: insights from consumers and practitioners in Malaysia

Prevalence of traditional eye medicine and self-treatment in Gurage Zone, Rural Ethiopia

### **Critical Care**

Improving the non-structural preparedness of the selected hospital based on the FOCUS-PDCA1 model: action research

The accuracy of predicting hospital admission by emergency medical service and emergency department personnel compared to the prehospital MEWS: a prospective multicenter study

Prior emergency medical services utilization is a risk factor for in-hospital death among patients with substance misuse: a retrospective cohort study

### **Dementia**

Improving our understanding of the complex relationship between cancer-related cognitive decline and Alzheimer's disease

No Association Found: Adverse Childhood Experiences and Cognitive Impairment in Older Australian Adults

Universal Prevention of Dementia in Italy: A Document Analysis of the 21 Italian Regional Prevention Plans

[Factors associated with care partner identification and education among hospitalized persons living with dementia](#)



## **Dental**

[Virtual bracket removal: a comparative assessment of different software packages](#)

[A scoping review of the links between early childhood caries and clean water and sanitation: the Sustainable Development Goal 6](#)

[Sleep disorder experienced by healthcare nurses after terminating Zero-COVID-19 policy](#)

[Efficacy of buccal pad fat as a new approach in the treatment of gingival recession: a systematic review](#)

## **Diabetes**

[Children and young people diabetes toolkit](#)

[Maintaining prediabetic status after diagnosis results in better long-term health, study finds](#)

[Combining popular diabetes drugs offers complementary heart and kidney benefits, research finds](#)

[Researchers identify 'first responder' cells in pancreas crucial for blood sugar control](#)



## **Diet, Nutrition and Obesity**



[Obesity as a disease: a pressing need for alignment](#)

[Could a dietary fiber supplement offer long-awaited treatment for food allergy sufferers?](#)

[Novel genomic variants related to visceral adiposity index \(VAI\) and body adiposity index \(BAI\) in Indian sib-pairs](#)

[Cuts to processed meat intake bring a range of health benefits](#)



### **Digital Health Technology**

[Harnessing Artificial Intelligence to Predict Ovarian Stimulation Outcomes in In Vitro Fertilization: Scoping Review](#)

[Self-Management Using eHealth Technologies for Liver Transplant Recipients: Scoping Review](#)

[Interpretable artificial intelligence to optimise use of imatinib after resection in patients with localised gastrointestinal stromal tumours: an observational cohort study](#)

[Assessing GPT-4's Performance in Delivering Medical Advice: Comparative Analysis With Human Experts](#)



### **End of Life Care**

[Validity of dietary intake methods in cancer cachexia](#)

[The meaning of culture in nursing at the end of life – an interview study with nurses in specialized palliative care](#)

## **Epidemiology**

[Digital contact tracing data for COVID-19 unveils detailed epidemic dynamics](#)

[Neighborhood impact on children's well-being shifted during COVID-19 pandemic, ECHO study suggests](#)

[Nearly one in 10 pregnant people who get COVID will develop long COVID](#)



## **Immunisation and Infection**

[Willingness to get vaccinated initially and yearly against COVID-19 and its association with vaccine hesitancy, vaccine knowledge and psychological well-being: a cross-sectional study in UK adults](#)

[The inclusion of children and adolescents in tuberculosis diagnostic development and evaluation—a consensus statement](#)

[The impact of Covid-19 vaccine spring boosters on Covid-19 hospital admissions in England 2022/23](#)

## **Inclusion and Diversity**

[NMC's new chief executive resigns following backlash](#)

[Making sense of health inequalities](#)

[Help us stamp out racism in maternity services, top midwife urges next government](#)

[Fireside Chat: Tackling Women's Health Inequalities](#)

[Trends in Gender, Ethnicity, & Less-Than-Full-Time Training among Reconstructive Plastic Surgery Registrars and Consultants between 2009 and 2020](#)

## **Learning Disability**

[Elevated unanticipated acoustic startle reactivity in dyslexia](#)

[The Association between Reading Anxiety and Reading Achievement across World Populations: A Meta-Analysis](#)

[The Relationship Between Auditory and Cognitive Processing Abilities in Children With Specific Learning Disorders](#)

## **Medical Education**

[Prioritisation of clinical trial learning needs of musculoskeletal researchers: an inter-disciplinary modified Delphi study by the Australia & New Zealand musculoskeletal clinical trials network](#)

[Qualitative evaluation of a multidisciplinary master of cancer sciences: impacts on graduates and influencing curricular factors](#)

[LGBTQIA health in medical education: a national survey of Australian medical students](#)

## **Mental Health**



[Suicidal Ideation and Attempts Among Youth With Physical-Mental Comorbidity in Canada: Proposal for an Epidemiological Study](#)

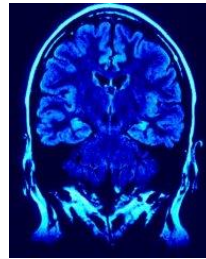
[Media Use and Its Associations With Paranoia in Schizophrenia and Bipolar Disorder: Ecological Momentary Assessment](#)

[News Media Framing of Suicide Circumstances and Gender: Mixed Methods Analysis](#)

[The Role of Humanization and Robustness of Large Language Models in Conversational Artificial Intelligence for Individuals With Depression: A Critical Analysis](#)

[Trauma affects how refugees feel about themselves and others, but how can clinicians help?](#)

[A review of guidelines for perinatal mental health: psychological and psychosocial assessment and intervention](#)



## **Neurology**

[Rest-Activity Rhythm Differences in Acute Rehabilitation Between Poststroke Patients and Non-Brain Disease Controls: Comparative Study](#)

[Semantic Variant of Primary Progressive Aphasia With GlyRI±1 Autoantibodies](#)

[Clinical Spectrum of Anti-GQ1b Antibody Syndrome](#)

[Effect of Sleep Restriction on Adolescent Cognition by Adiposity](#)

[Can we predict how fast cognitive decline will occur with early Alzheimer's?](#)

## **Obstetrics and Gynaecology**

[A framework of workplace yoga for expectant mothers: A comprehensive review of benefits, safety considerations, and future perspectives](#)

[Uterus transplantation: A scoping review focused on obstetric outcomes](#)

[Feto-maternal indicators of cardiac dysfunction as a justification for the cardiac origins for pre-eclampsia](#)

[Impact of previous gestational diabetes management on perinatal outcomes in subsequent pregnancies affected by gestational diabetes mellitus](#)



## **Oncology**

[Cancer and premature mortality – pushing the frontiers of cancer care](#)

[New report from STRONG-AYA on addressing needs of adolescents and young adults with cancer in Europe](#)

[Carcinogenicity of talc and acrylonitrile](#)

[In-depth organoid profiling of pancreatic cancer](#)

[Immune-checkpoint inhibitor-mediated myocarditis: CTLA4, PD1 and LAG3 in the heart](#)

## **Ophthalmology**

[Comparison of the repeatability and reproducibility of corneal thickness mapping using optical coherence tomography according to tear film break-up time](#)

[Analyses of eye movement parameters in children with anisometropic amblyopia](#)

[Quantitative urinary proteome analysis reveals potential biomarkers for disease activity of Behcet's disease uveitis](#)

[Comparative analysis of changes in retinal layer thickness following femtosecond laser-assisted cataract surgery and conventional cataract surgery](#)



## **Paediatrics**

[Cumulative sucrose exposure for repeated procedural pain in preterm neonates and neurodevelopment at 18 months of corrected age: a prospective observational longitudinal study](#)

[Infection in preterm infants receiving topical emollient oil massage: a systematic review and meta-analysis of randomised control trials](#)

[Outcome of creating clustering nursing care and healing environment on premature infants behavioural outcomes](#)

[Themes associated with uncollected paediatric prescriptions at a large tertiary childrens hospital: a retrospective, observational study](#)

## **Pain Medicine**

[Pain management: education of the adult Intensive Care Unit nursing staff](#)

[Radiofrequency of suprascapular nerve as an analgesic strategy for chronic pain management. systematic review and meta-analysis](#)

[Distinct Thalamo-Subcortical Circuits Underlie Painful Behavior and Depression-Like Behavior Following Nerve Injury](#)

## **Patient Experience**

[Patient and carer experiences of cancer cachexia and its management](#)

['A lightbulb moment': carers' experiences of behavioural symptoms in motor neurone disease before and after MiNDToolkit](#)

[Entering Medicine as a Physician and a Patient](#)



## **Pharmacology**

[Applying the EU regulatory framework for the clinical use of psychedelics](#)

[Polypharmacy for perinatal mood and anxiety disorders](#)

[Inactivated influenza vaccine: updated national protocol](#)

[Clinical considerations for patients prescribed clozapine](#)

## **Physiotherapy/Rehabilitation**

[Using Twitter \(X\) to Mobilize Knowledge for First Contact Physiotherapists: Qualitative Study](#)

[An Algorithm, Integrating a Short Form of the Functional Autonomy Measurement System, to Predict Discharge Destination After Acute Care Post-Stroke](#)

[Application of Hypothetico Deductive Reasoning Process for Physiotherapy Management of a Case with Meniscus Injury](#)

## **Primary Care**

[ICB cuts funding for advice and guidance after GPs fail targets](#)

[RCGP calls on government to overhaul NHS workforce plan to boost GP numbers](#)

[Scottish GPs to receive funding to cover increased pension contributions costs](#)

[Most GPs in England back taking collective action in contract dispute, poll suggests](#)

[Patients with ADHD up to 90% more likely to miss GP appointments, study finds](#)

[We are in danger of losing the sacrosanctity of the GP role](#)

[Survival of general practice 'at breaking point', say researchers](#)

[Renewed call for whooping cough vaccine uptake as cases rise again](#)

[Royal colleges urge Government to review GP and PA workforce goals](#)



### **Seniors and Aging**

[Your guide to the RSV vaccine for older adults](#)

[Study investigates vascular dysfunction as mechanism underlying link between heart and bone health in older adults](#)

[Aging retinal pigmented epithelium: Omics-based insights into vision decline](#)



### **Sexual Health**

[Validation of self-reported human papillomavirus vaccination in young adult men who have sex with men](#)

[A meta-analysis to quantify the risk of disseminated gonococcal infection with Porin B serotype](#)

[Smart Sex Toys: A Narrative Review of Recent Research on Cultural, Health and Safety Considerations](#)

[Low-cost point-of-care urine test to enhance PrEP adherence](#)



## **Sleep Medicine**

[Effects of high-intensity interval training on subjective sleep quality and daytime sleepiness in patients with obstructive sleep apnea: A secondary analysis from randomized controlled trial.](#)

[Sleep oscillations related to memory consolidation during aromatases inhibitors for breast cancer](#)

[Longitudinal associations of social jetlag with obesity indicators among adolescents - Shanghai Adolescent Cohort](#)



## **Sports Medicine/Fitness**

[Psychosocial predictors of doping intentions and use in sport and exercise: a systematic review and meta-analysis](#)

[From 'faster, higher, stronger' to 'slower, calmer, wiser' - together: incorporating the athlete voice in sports medicine](#)

[Do not neglect injury severity and burden when assessing the effect of sports injury prevention interventions: time to paint the whole picture](#)

[Mental health surveillance in elite Para athletes: early identification and follow-up of athletes at risk of mental health problems](#)

## **Surgery**

[Accurate predictor of occult mediastinal nodal metastasis in stage I lower-lobe non-small cell lung cancer](#)

[Identification of a subpopulation of highly adherent endothelial cells for seeding synthetic vascular grafts](#)

[Long-Term Outcomes Following the Ross Procedure in Neonates and Infants: A Multi-Institutional Analysis](#)

[Is transplantation the only option for diastolic heart failure?](#)

## **Vaping/Smoking**



[A tobacco control policy analysis framework that extends into the future](#)

[Systematic review and meta-analyses of cytosine to support tobacco cessation](#)

[The Association Between Personality Traits and Health-Related Quality of Life and the Mediating Role of Smoking: Nationwide Cross-Sectional Study](#)

## **World Health Organisation**

[MeDevIS platform announced to boost access to medical technologies and devices](#)

[WHO updates laboratory biosecurity guidance](#)

[WHO prequalifies the first self-test for hepatitis C virus](#)

## **Wound Management**

[Beyond surgery: Pre- and post-operative care in children with ankyloglossia](#)

[Research Progress of Hydrogel Microneedles in Wound Management](#)

[The efficacy of topical oxygen therapy for wound healing: A meta-analysis of randomized controlled trials and observational studies](#)

## **SOCIAL AND COMMUNITY CARE**

[Adult social care: key facts and figures](#)

[The legacy of Conservative rule for adult social care](#)

[Former social worker becomes minister in DfE](#)

[Using motivational interviewing in social work: four key techniques](#)

['We are all one big family': how one council has built a culture of support](#)

['Your down-to-earth approach has made us feel like a family, not a service'](#)

[Stephen Kinnock appointed minister for social care](#)

[Why understanding executive function is critical when working with homeless people](#)

[Wes Streeting and Bridget Phillipson handed responsibility for social care in Labour government](#)

[Labour urged to prioritise social work after huge election victory](#)

## **Key Resources**

[e-Learning](#)

[Research Register for Social Care](#)

[Social Care Online](#)

[Social Care Research Ethics Committee](#)

## **HEALTH MANAGEMENT**

[Community-led and person-centred approaches to health and wellbeing \\*conference](#)

[Building new health system action to reduce obesity: audit findings of integrated care board forward plans](#)

[This campaign will leave an uncertain dawn for the NHS](#)

[Keeping your integrated care system safer from cyber attacks](#)

[Out of sight: the hidden impact of the outsourcing of NHS cataract care on eye care departments in NHS trusts](#)

[System working in the NHS: how trusts work in partnership to improve care and outcomes for people](#)

[NHS Providers briefing on NHS pay](#)

[Harnessing technology to unlock preventative healthcare at scale](#)

[Care and health career academies: what good looks like](#)

[The Nursing and Midwifery Council: independent culture review](#)

[Making sense of health inequalities](#)

[Building new health system action to reduce obesity: audit findings of integrated care board forward plans](#)

**EVIDENCE BASED PRACTICE**  
BMJ|Evidence Centre

### **BMJ Evidence Updates**

[Preventing adverse events during paediatric cancer treatment: protocol for a multi-site hybrid randomised controlled trial of catheter lock solutions \(the CLOCK trial\)](#)

[Geography versus sociodemographics as predictors of changes in daily mobility across the USA during the COVID-19 pandemic: a two-stage regression analysis across 26 metropolitan areas](#)

[Frameworks describing the transition to open labour employment for persons with mild and moderate intellectual disability: a scoping review protocol](#)

[Adaptation and feasibility of WHO PM+ for adolescents living with HIV in KwaZulu-Natal Province, South Africa: an implementation feasibility study protocol](#)

[Psychosocial outcomes following emergency laparotomy \(POLO\) study: a study protocol for a multicentre mixed-methods prospective cohort study assessing the psycho-social outcomes following emergency laparotomy in adults](#)

[Attitude of Jordanians towards a new enactment for an opt-out organ donation system: a cross-sectional study](#)

[Evaluation of the effect of low-intensity pulsed ultrasound in pain and dysfunction for knee osteoarthritis: a double-blind, randomised controlled trial protocol](#)

[Emergency department workforces experiences and perceptions of well-being from an international perspective: a scoping review](#)

[Dual-wavelength dye laser combined with betamethasone injection for treatment of keloids: protocol of a randomised controlled trial](#)

[Interactive voice response \(IVR\) for tobacco cessation: a systematic review](#)

[Sleep, Health Outcomes and Body Weight \(SHOW\) study: a measurement burst design study on sleep and risk factors for obesity in black emerging adults in North Carolina, USA](#)

[Exploring fidelity of enactment in a cluster randomised controlled trial testing the effectiveness of 'gatekeeper training for pesticide vendors in reducing self-poisoning in rural Sri Lanka: protocol for a multimethod qualitative study](#)

[Evolution of serious and life-threatening COVID-19 pneumonia as the SARS-CoV-2 pandemic progressed: an observational study of mortality to 60 days after admission to a 15-hospital US health system](#)

[Intervention strategies for management of comorbid depression among individuals with hypertension: a scoping review protocol](#)

[Defining complicated urinary tract infection and route of antibiotics in children presenting to the emergency department: a cohort study using the Melbourne RUPERT clinical score](#)

[Study protocol: Collaboration Oriented Approach to Controlling High blood pressure \(COACH\) in adults - a randomised controlled trial](#)

[Patient engagement in a Canadian health research funding institute: implementation and impact](#)

[Pilot and quantitative evaluation of the TARGET acne toolkit by UK pharmacy professionals working in general practice](#)

[Clinical experiences, current approaches, opinions and awareness of healthcare professionals regarding the audio-vestibular consequences of individuals with traumatic brain injury: a cross-sectional online survey study](#)

[Accuracy of clinical diagnosis of behavioural variant frontotemporal dementia: a protocol for a systematic review and meta-analysis](#)

[Access to personalised dementia care planning in primary care: a mixed methods evaluation of the PriDem intervention](#)

[Comparison of brace to observation in stable, radiological developmental dysplasia of the hip: a protocol for a global multicentre non-inferiority randomised trial](#)

[Lived experiences of village-based patients with chronic kidney disease receiving haemodialysis at Mirpur, Azad Kashmir, Pakistan: a transcendental phenomenology study protocol](#)

[Evaluating the efficacy of wearable biofeedback on the outcomes of exercise interventions in people with chronic non-specific spinal pain: protocol for a systematic review and meta-analysis](#)



**Cochrane**

[Trifocal compared with extended depth of focus intraocular lenses for people having cataract surgery](#)

[Do bone-modifying medicines help reduce bone loss in women with early or locally advanced breast cancer?](#)

[The use of machines to preserve kidneys from deceased donors prior to transplantation](#)

[Routine prophylactic stenting reduces the incidence of major urological complications in kidney transplant recipients](#)

[Cognitive behavioural therapy and third-wave approaches for anxiety and related disorders in older people](#)

[Lumbar braces and other assistive devices for treatment of chronic low back pain](#)

[Carotid revascularisation versus medical treatment for asymptomatic carotid artery stenosis](#)

[Transabdominal pre-peritoneal technique \(TAPP\) versus totally extraperitoneal \(TEP\) technique: which keyhole surgery method is better for repairing groin hernias in adults?](#)



NICE Clinical Knowledge Summaries provides primary care practitioners with a readily accessible summary of the current evidence base and practical guidance on best practice in respect of over 300 common and/or significant primary care presentations.

The service is being regularly maintained and upgraded as and when significant new evidence emerges and up to 10 new topics will be added each year. You can access the service [here](#).

### **National Institute for Health Research (NIHR) Health Technology Assessment**

[Over-the-counter nasal sprays proven to keep colds and flu at bay and reduce antibiotic use](#)

[NIHR and Diabetes UK co-fund research to address diabetes distress](#)

### **DoH Press Releases/New Publications**

[Transparency data: The 2019 voluntary scheme for branded medicines pricing and access operational review: 27 September 2023](#)

[Press release: Secretary of State makes economic growth a priority](#)

[Press release: New health secretary joined by NHS CEO on London GP surgery visit](#)

[Speech: Statement from the Secretary of State for Health and Social Care](#)

[Speech: The NHS is broken: Health and Social Care Secretary statement](#)

## **LIBRARY "BITS AND PIECES"**

### **Published recently? Completed a research project?**

Tell us about it! Fill out our publication or research repository form by clicking [here](#) and we'll display your work on our website

[Publication repository](#)

[Research repository](#)

The above current awareness bulletin has been produced by Keyll Darree Library and Information Service. We aim to produce the bulletin every week. If you need any help locating or accessing any of the items included in this issue, please contact the library staff on 642993/642974.

As usual, we welcome any feedback, so please let us know if you have any comments about format, content, length, arrangement or indeed, any other observations. If you know of anyone else who might like to receive the bulletin, or you would like your name removed from the distribution list, again, please let us know.

Check out our library website at [www.librarykeylldarree.gov.im](http://www.librarykeylldarree.gov.im) for details of all our services, facilities and any forthcoming events.